

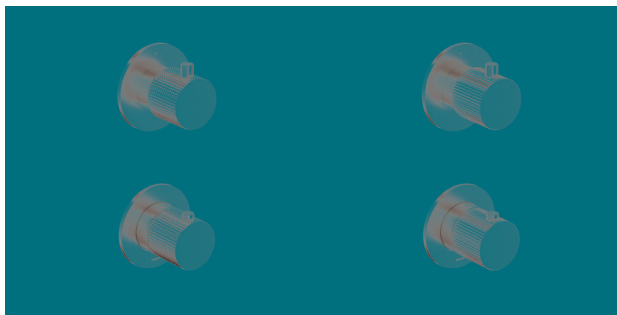
# CB7009EXT - GY7009DEXT - GY7009REXT

**hotbath**  
italian bathroomware

Trim parts for thermostatic mixer with 2-way diverter  
 Parti esterne per miscelatore termostatico con deviatore a 2 vie  
 Parties extérieures pour mitigeur thermostatique avec inverseur 2 voies  
 Partes exteriores para termostático con inversor de 2 vías  
 AP-Teile für Thermostatbatterie mit 2-Wege Umsteller  
 Afbouwdelen voor thermostatische mengkraan met 2-weg stop-omstel

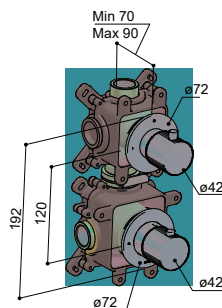
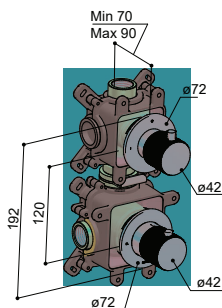
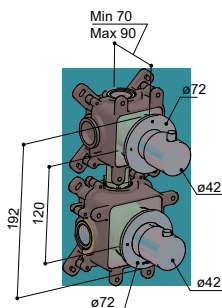


**CB7009EXT**



**GY7009DEXT**

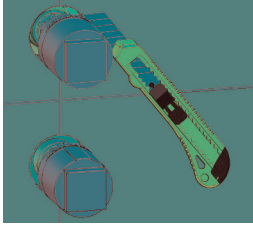
**GY7009REXT**



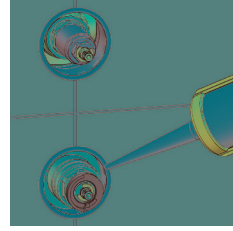
## BEFORE STARTING / PRIMA DI INIZIARE / AVANT DE COMMENCER / ANTES DE EMPEZAR / VOR DEM START / VOORDAT JE BEGINT

 <b>P</b> bar	 MAX 5 1 MIN	 3 1	 15s	RECOMMENDED: BALANCED PRESSURES	
 <b>T</b> °C	 MAX 80	 60 45			 ON OFF

Once the mixer is installed in the wall, cut along the finished wall and remove the plastic protection



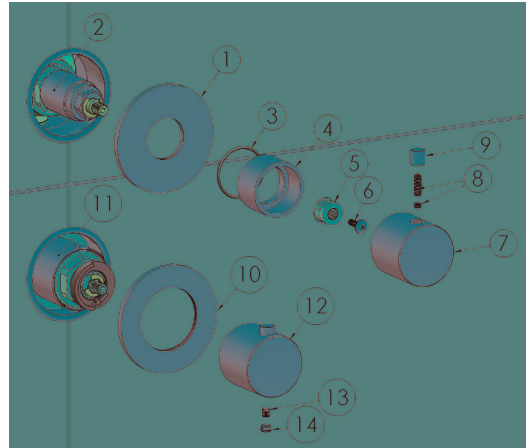
Put the silicone between the cover plate and the wall



### TRIM FIXING

INSTALLATION

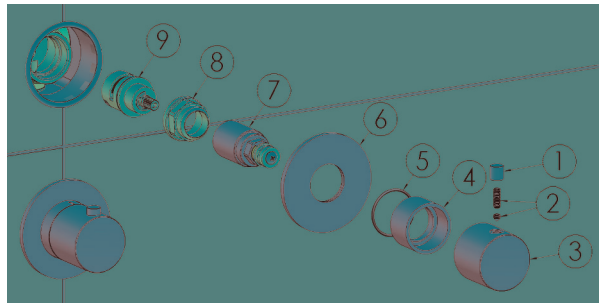
1. Fix the cover plate (1) on the threaded rod (2).
2. Screw the adapter (4) with their O-ring (3), until the plate (1) is against the wall.
3. Fix the insert (5) and fix the screw (6).
4. Position the handle (7) on the insert (5) and rotate until the vertical position is reached.
5. Screw the grub screw (8) with a 2,5 mm Allen key.
6. Screw the lever (9).
7. Fix the cover plate (10) on the chromed ring (11).
8. Fix the handle (12) screw the grub screw (13) with a 2,5 mm Allen key.
9. Fix the cap (14).



### REPLACEMENT OF THE DIVERTER CARTRIDGE

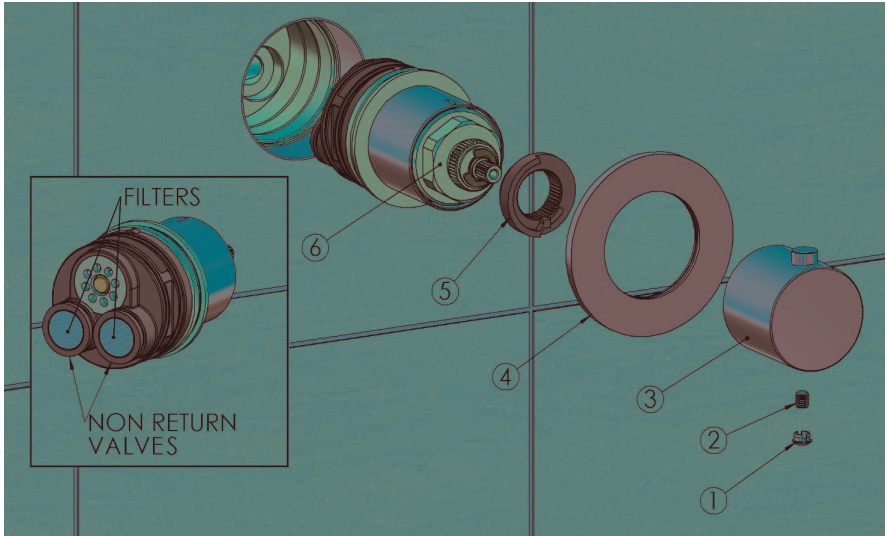
MAINTENANCE

1. Close the water inlets
2. Remove the lever (1) and unscrew the grub screw (2) with 2,5 mm Allen key
3. Remove the diverter handle (3)
4. Unscrew the chromed adapter (4), being careful not to lose the O-ring (5)
5. Remove the cover plate (6)
6. Unscrew the threaded rod (7)
7. Unscrew the flange (8) anti-clockwise, with a 17 wrench. Remove the diverting cartridge (9)
8. Before replacing the cartridge, clean thoroughly and grease the inner seat of the body
9. Replace the cartridge (9).
10. Screw the flange (8) and the threaded rod (7)
11. Reassemble the trim following the instructions of TRIM FIXING



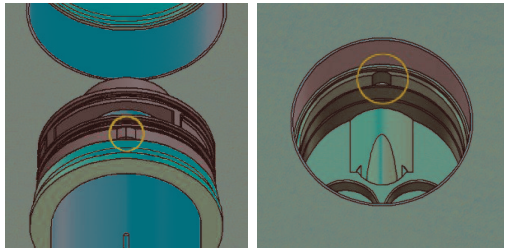
### REMOVE AND CLEAN THERMOSTATIC CARTRIDGE

1. Remove the cup(1), Unscrew the grub screw (2) with an 2,5 mm Allen key
2. Remove the handle (3). Remove the plate (4).
3. Close the water inlets, in order to isolate the thermostatic cartridge.
4. Remove the stop ring(5).
5. Unscrew the thermostatic cartridge(6) anti-clockwise with a 30mm wrench.
6. Remove the thermostatic cartridge(6) and clean its filters under running water or leave to soak in vinegar in presence of limestone. Grease the O-rings and, if damaged, replace them with new ones. 2x OR 2175 mm 44,17 x 1,78 1x OR 2187 mm 47,35 x 1,78



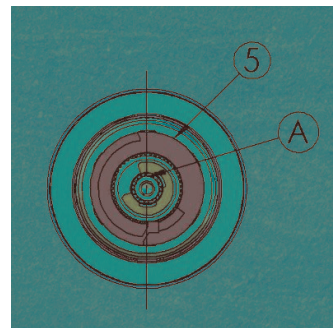
### RE-INSTALL THE THERMOSTATIC CARTRIDGE

1. Check that the reference on the body of the cartridge is upward
2. Match the reference on the body of the thermostatic cartridge with the reference in the mixer body
3. Screw the thermostatic cartridge (6) clockwise with a 30mm wrench



### POSITION OF THE STOP RING

1. Place the stop ring(5) as shown in the image below.
2. Using the handle, rotate the broached rod (A) to reach the set temperature of 38°C (check the temperature with a thermometer).



CLEANING - PULIZIA - NETTOYAGE - REINIGUNG - LIMPIEZA - REINIGING

		WARNING	✓			✗		
<b>CR</b> CHROME	<b>GN</b> BRUSHED NICKEL	Inoxidable electrolytic finish Finitura elettrolitica inossidabile Finition électrolytique inoxydable Inoxidierbare elektrolytische Ausföhrung Acabado electrolytico inoxidable Inoxidable elektrolytische afwerking						
<b>BB</b> BRUSHED BRASS		Natural metal finish: patina will form over time Finitura di metallo naturale: si formerà una patina nel tempo Finition en métal naturel: une patine se formera avec le temps Natürliche Metallausföhrung: eine Patina wird sich mit der Zeit bilden Acabado metálico natural: la pátina se formará con el tiempo Natuurlijke metalen afwerking: na verloop van tijd vormt zich patina						
<b>AB</b> AGED BRASS		Aged metal finish: patina will form over time Finitura di metallo invecchiato: si formerà una patina nel tempo Finition en métal vieilli: une patine se formera avec le temps Gealterte Metallausföhrung: eine Patina wird sich mit der Zeit bilden Acabado de metal envejecido: la pátina se formará con el tiempo Verouderde metalen afwerking: na verloop van tijd vormt zich patina						
<b>WH</b> MATT WHITE		Varnished finish: subject to scratches if not properly handled Finitura verniciata: soggetta a deterioramento se non trattata correttamente Finition vernie: sujette aux rayures si ne pas traitée correctement Lackierte Ausföhrung: Kratzer bei unsachgemäßer Behandlung Acabado barnizado: puede rayarse si no se manipula correctamente Gelakte afwerking: gevoelig voor krassen als er niet goed mee wordt omgegaan						
<b>AI</b> AGED IRON		Plated finish: subject to scratches if not properly handled Finitura placcata: soggetta a deterioramento se non trattata correttamente Finition plaquée: sujette aux rayures si ne pas traitée correctement Plattierte Ausföhrung: Kratzer bei unsachgemäßer Behandlung Acabado chapado: puede rayarse si no se manipula correctamente Geplaatde afwerking: gevoelig voor krassen als er niet goed mee wordt omgegaan						
<b>BBP</b> BRUSHED BRASS PVD	<b>BCP</b> BRUSHED COPPER PVD	Inoxidable PVD finish Finitura PVD inossidabile Finition PVD inoxydable Inoxidierbare PVD Ausföhrung Acabado PVD inoxidable Inoxidable PVD afwerking						
<b>PBP</b> POLISHED BLACK PVD	<b>MBP</b> MATT BLACK PVD							

TERMS OF SALE AND WARRANTY  
CONDIZIONI DI VENDITA E GARANZIA  
CONDITIONS DE VENTE ET GARANTIE

CONDICIONES DE VENTA Y GARANTÍA  
VERKAUFSBEDINGUNGEN UND GARANTIE  
VERKOOP- EN GARANTIEVOORWAARDEN

NETHERLANDS  
BELGIUM  
LUXEMBOURG  
UK AND IRELAND

ALL COUNTRIES  
(EXCEPTED BENELUX, UK AND IRELAND)

<https://www.hotbath.nl/garantie>

<https://hotbath.it/en/termsforsale>



Hotbath B.V.  
Nieuwland Parc 210  
2952 DC Alblasserdam  
Nederland  
E [info@hotbath.nl](mailto:info@hotbath.nl)  
W [hotbath.nl](http://hotbath.nl)



Hotbath Srl  
Via Marco Polo 135/D  
I-55049 Viareggio  
Italy  
E [info@hotbath.it](mailto:info@hotbath.it)  
W [hotbath.it](http://hotbath.it)

hotbath  
italian bathroomware